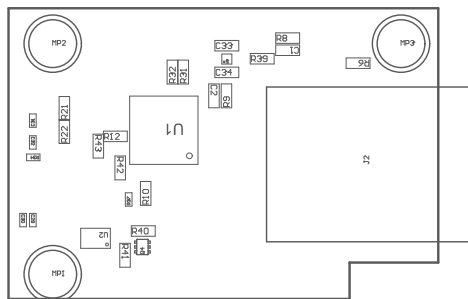


ZZ4 ■ These assemblies must comply with workmanship standards IPC-A-610 Class 2, unless otherwise specified.



PCB VIEWED FROM TOP SIDE	BOARD #: PROC188	REV: A	SUN REV: ab3fb1f6524b28b1277c5adb9e49cff9936b1d14
	TID #: N/A		
PLOT NAME = Top Assembly Drawing	GENERATED : 1/23/2025 5:49:49 PM		TEXAS INSTRUMENTS

